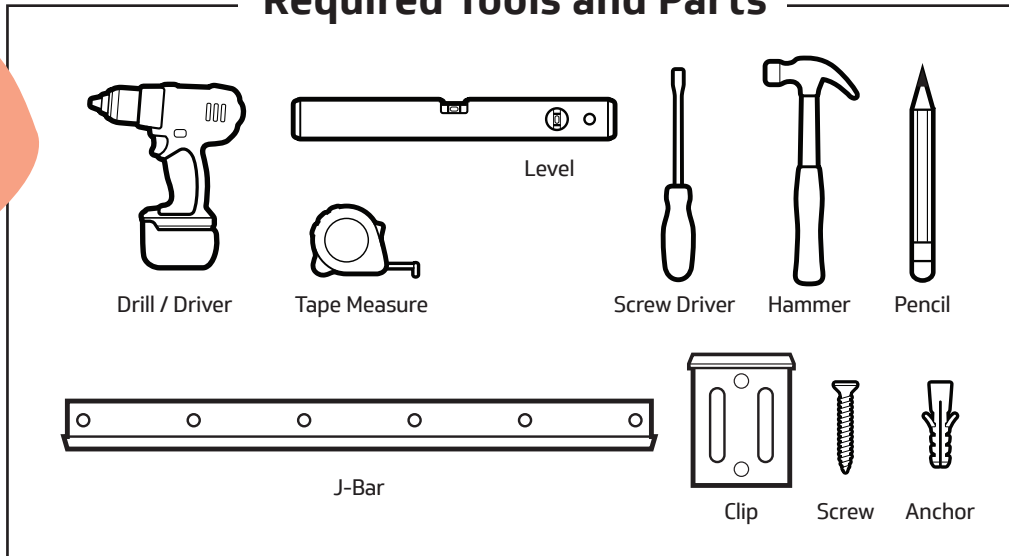
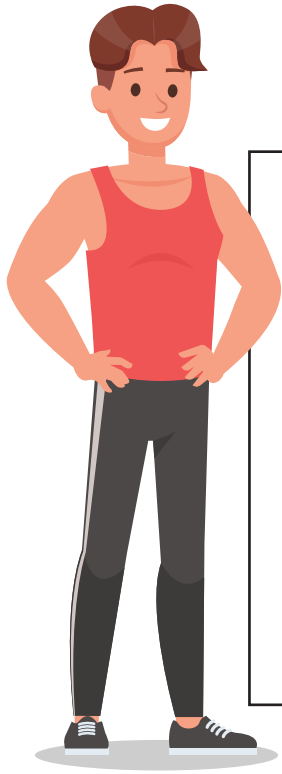


# Gym Wall Mirror Kit

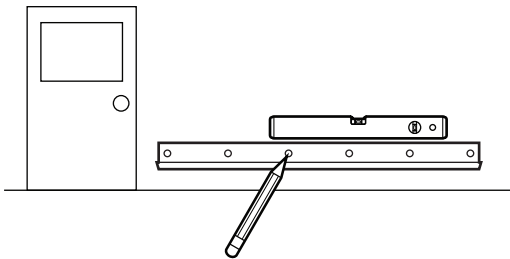
## DIY Easy to Install

### Required Tools and Parts



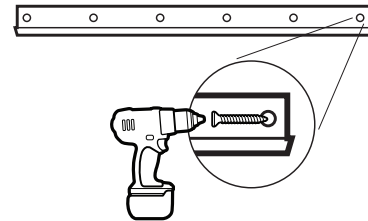
1

Hold the J-Bar in place on the wall just above the marks you just made. Use a level while you make 4 marks in a line with a pencil to show where to match them up with the holes in the J-Bar bottom support.



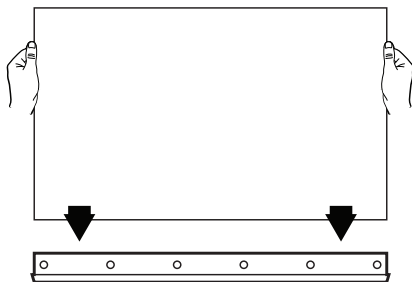
2

Move the J-Bar to line up with the 4 holes with the 4 EZ anchors and hold it securely in place. Place 4 screws through the holes and drive them in.



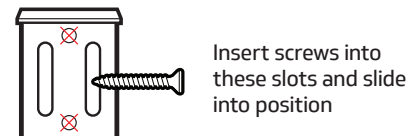
3

Carefully angle the mirror as you insert it into the J-Bar. Your mirror is now up on the wall.



4

Use the slots for the screws so the clip can slide up over the mirror then slide down to keep mirror secure.



Insert screws into these slots and slide into position

